

This drawing shall remain the property of, and shall not be reproduced, without first obtaining the written authorization of James S Bates Architect PLLC

Project No. 2008 Date 12/16/2022

Drawn By JSB Revisions

Drawing Title

PAVING PLAN

Drawing No.

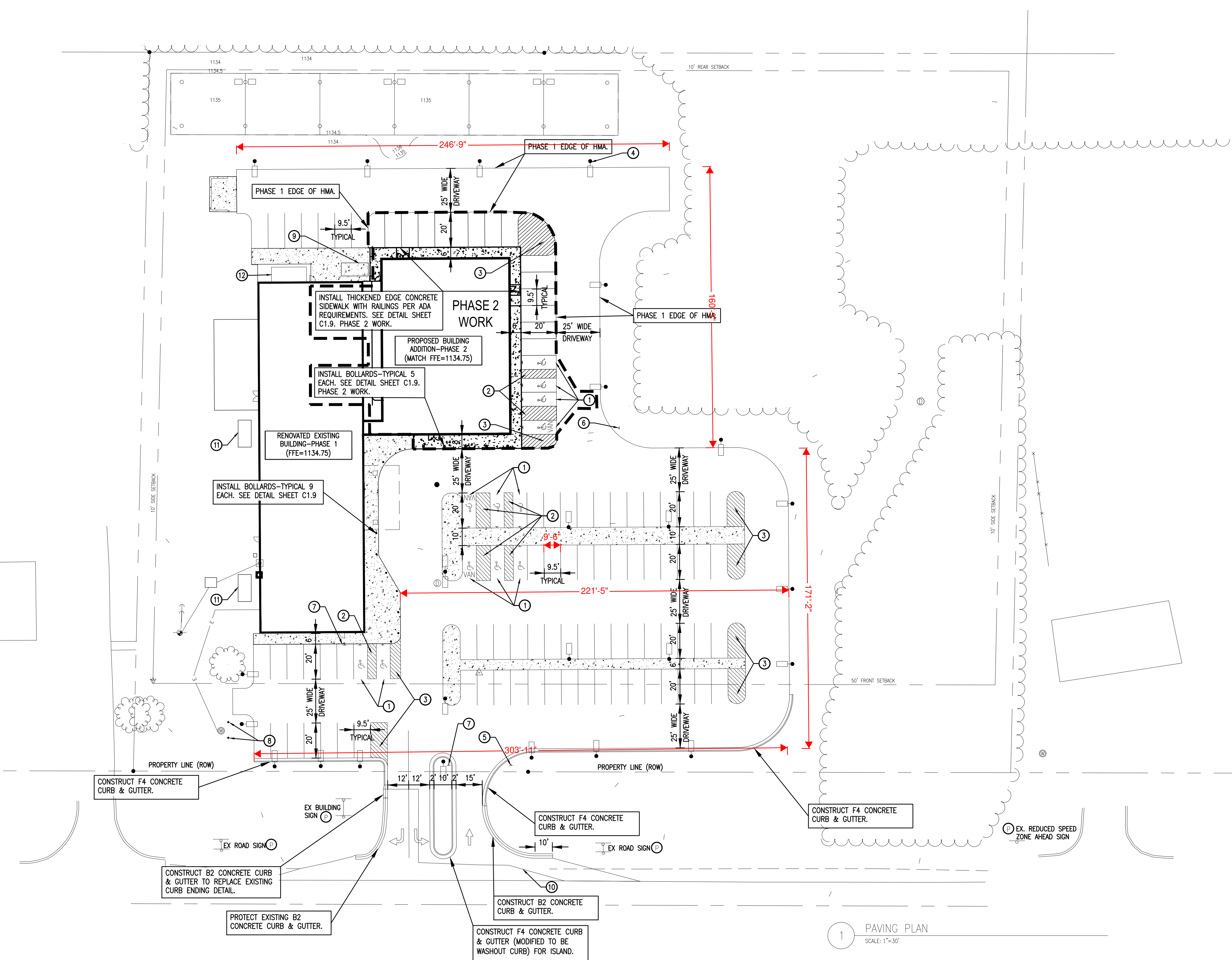
C1.7

SITE BENCH MARK—  
 TO BE SET PRIOR TO CONSTRUCTION.  
 THE SITE IS BASED ON THE STATE PLANE  
 COORDINATE SYSTEM.  
 CONTOUR ELEVATIONS ARE BASED ON THE  
 NAVD88 DATUM.

- LEGEND**
- ==== MDOT F-4 "STANDARD" CURB UNLESS NOTED OTHERWISE.
  - ▨ 6" CONCRETE SIDEWALK WITH FIBER REINFORCEMENT OVER COMPACTED SAND BASE. BID "ALTERNATE No.2" ADD SIDEWALK "SNOW MELT SYSTEM" TO ALL SIDEWALKS UNLESS NOTED AS NOT REQUIRED IN A SPECIFIC AREA.
  - ⊙ PROTECT

- PAVING KEY**
- 1 TYPICAL BARRIER-FREE PARKING SPACES ARE 8' WIDE x 20' LONG. AISLES ARE 8' WIDE x 20' LONG AND 5' WIDE x 20' LONG. SEE PLAN FOR PLACEMENT/LAYOUT. AT EACH NEW BARRIER FREE PARKING SPACE, INSTALL (1) EACH R7-8mi BARRIER FREE SIGN (TOTAL OF 12). SIGNS SHALL BE MOUNTED ON 13' LONG 3# STEEL POST. SPACES NOTED AS "VAN" SHALL ALSO RECEIVE A "LIFT VAN ACCESSIBLE" SIGN (TYPICAL OF 3). TYPICAL ALL BARRIER-FREE PARKING SPACES. SEE DETAIL 1a, SHEET A7.4.
  - 2 TYPICAL BARRIER FREE STRIPING SHALL BE 4" WIDE, 20' LONG, BLUE FAST DRY PAVEMENT MARKINGS. DIAGONAL STRIPING SHALL BE 8" WIDE BLUE AT 3' CENTER TO CENTER. AT EACH BARRIER FREE SPACE, INSTALL BARRIER FREE SYMBOL PAVEMENT MARKING. STRIPE PER ADA REQUIREMENTS. TYPICAL ALL BARRIER-FREE PARKING SPACES.
  - 3 PLACE "NO PARKING" STRIPING AS SHOWN. DIAGONAL STRIPING SHALL BE 4" WIDE YELLOW AT 1' CENTER TO CENTER. PLACE PERIMETER STRIPING AS SHOWN AROUND DIAGONAL STRIPING.
  - 4 PROPOSED SITE LIGHTING POLE. SEE ELECTRICAL FOR ADDITIONAL INFORMATION.
  - 5 PROPOSED "NO SMOKING SIGN" AND "ALL TRAFFIC TO RIGHT SIGN" ON 13' LONG 3# STEEL POST. SEE DETAIL 1a, SHEET A7.4.
  - 6 PROPOSED "DELIVERY SIGN" ON 13' LONG 3# STEEL POST. DELIVERY SIGN TO BE www.myparkingsign.com MODEL K-1749, 12"x18" DIAMOND GRADE REFLECTIVE ALUMINUM W/RIGHT ARROW. MOUNT BOTTOM OF SIGN 60" ABOVE PAVEMENT OR GRADE.
  - 7 PROPOSED "STAFF ONLY PARKING SIGN" ON 13' LONG 3# STEEL POST. SEE DETAIL 1a, SHEET A7.4.
  - 8 INSTALL (2) BOLLARDS (FOR WELL SAFETY). SEE DETAIL SHEET C1.9.
  - 9 ENERGY RECOVERY UNIT EQUIPMENT SLAB, BY STRUCTURAL SEE STRUCTURAL/MECHANICAL SHEETS FOR INFORMATION AND DETAIL 6/SS.3. PAD TO BE STANDALONE WITH 3/4" JOINT FILLER W/SEALANT AROUND PERIMETER WITH SIDEWALK POURED UP TO THE PAD. DIMENSIONS TO BE COORDINATED WITH SPECIFIC EQUIPMENT PROVIDED.
  - 10 NEW HMA BOUNDARY. MAINTAIN EXISTING DRAINAGE PATTERNS-TYP.
  - 11 ENERGY RECOVERY UNIT EQUIPMENT SLAB, BY STRUCTURAL SEE STRUCTURAL/MECHANICAL SHEETS FOR INFORMATION AND DETAIL 6/SS.3. DIMENSIONS TO BE COORDINATED WITH SPECIFIC EQUIPMENT PROVIDED.
  - 12 COOLER SLAB, BY STRUCTURAL SEE STRUCTURAL/MECHANICAL SHEETS FOR INFORMATION AND DETAIL 3/SS.3. DIMENSIONS TO BE COORDINATED WITH SPECIFIC EQUIPMENT PROVIDED.

- PAVING NOTES**
1. THE CONTRACTOR SHALL COMPLY WITH ALL MDOT REQUIREMENTS LISTED IN THE MDOT PERMIT, INCLUDING ANY/ALL BONDS AND INSURANCE NECESSARY. A TEMPORARY SHOULDER CLOSURE WILL BE REQUIRED TO COMPLETE THE DRIVEWAY WORK. FOLLOW THE MDOT MAINTAINING TRAFFIC TYPICAL—"SHOULDER CLOSURE ON A 2-LANE UNDIVIDED ROADWAY No.122-NW-SHL-(R)." CONTRACTOR TO PROVIDE ALL SIGNING AND MISCELLANEOUS APPURTENANCES NOTED IN THIS DOCUMENT AS PART OF THE PHASE 1 WORK.
  - 2: IF PHASE 2 OF THE PROJECT IS NOT CONSTRUCTED, THE CONTRACTOR SHALL RESTORE (GRADE/SUBGRADE TO PROVIDE POSITIVE DRAINAGE AWAY FROM THE EXISTING BUILDING, TOPSOIL, SEED AND MULCH) THE AREA OF THE PROPOSED FUTURE PHASE 2 BUILDING AS PART OF THE PHASE 1 WORK. (THE AREA TO BE RESTORED SHALL BE BOUNDED BY THREE SIDES OF HMA AND THE RENOVATED BUILDING.



1 PAVING PLAN  
 SCALE: 1"=30'

ALL ITEMS ON THIS SHEET ARE PART OF PHASE 1 UNLESS NOTED OTHERWISE.



Know what's below.  
 Call before you dig.  
 Issued for Construction